



Touch-Dou Intelligent Printer











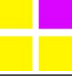



Please read this operation manual carefully
before proceeding to the computer

Touch-Dou hand-held printer



Explanation of function key



	You can insert Chinese, numbers, English, symbols, and so on		Delete the information that has been edited
	Edit variable year, month, day, hour, minute and second		Select existing messages on the printer memory
	Edit a variable serial number		Create new message
	Start printing or stop printing		Save edited information
	Edit the trade mark or logo		Save an additional information name
	Edit bar code and QR code		Minute movement of information segment position
	Setting system parameter (It needs to be operated under the guidance of the engineer)	信息名:	Current information name
	Battery remainder (For general reference only)	Total:	Check the number of printing

Operation instructions



Insert text

String: eyBoar

Font: Academy Engraved LET, Accidental Presidency, Agency FB, Baskerville Old Face, **Blackadder ITC**, Bodoni Bd BT, Bodoni MT

Hight: 40, 45, 50, 56, 60, **64**, 70

Width: **0**, 1, 2, 3, 4, 5, 6

Gap: -2, -1, **0**

Bold: normal, bold

Dir: 0°, 90°, 180°

Style: Regular, Underline, Italic

Vary: Normal, Outline, Dot

Invent

Example: Aa

Bind

Printing font : Click on the text to edit Chinese, English, numbers, symbols and so on. The font can be selected (such as Song font, boldface font, etc.). The height of the can be changed, and the maximum print can be 48mm. Characters can be selected in size and direction. Character effects are normal, dot matrix, hollow.

(For dot-matrix words, the width must be 0)

Bind **Edit variable data**



Edit text : Click the keyboard to pop up the keyboard interface, then you can edit the contents what you want to print.

Keyboard



Delete character



Edit English numbers



Hidden keyboard



The mouse cursor move to the tail



Lock up the capital letters



Insert barcode

Type: selectable barcode type (such as code39, code128, UFC-A, QR)

Data: Use a keyboard to enter digital or English

Gap: Gap width from 1-8

Ratio: you can choose 2 or 3

Checksum: Check code, you can choose to yes or no

Human read: you can choose 0, 1, or 2

Hight: Jet printing height, such as 16, 24, 32, 40 etc.

Dir: Jet printing direction, you can choose 0° ,90° ,180° ,270°

The screenshot shows a dialog box titled "Insert Barcode" with the following settings:

- Type: Code128 (selected)
- Data: yBoa
- Checksum: no
- Narrow: 1 (selected)
- Human read: 1 (selected)
- Ratio: 2 (selected)
- Hight: 64 (selected)
- Dir: 0° (selected)

Buttons: OK, CANCEL

QR code

Const: Enter value in the data bar to generate static QR code

Var: Through the data.txt file in the U disk, the data is refreshed and imported to the inkjet printer, which generates dynamic QR code.

[unable to select order] the data column will automatically generate 0

digits equal to the variable length.

Const + Var: Enter a fixed character in the data bar, then import the variable data in the u disk, to generate the complete content of the QR code. For example: China1234, China4567. ChinaABCD……

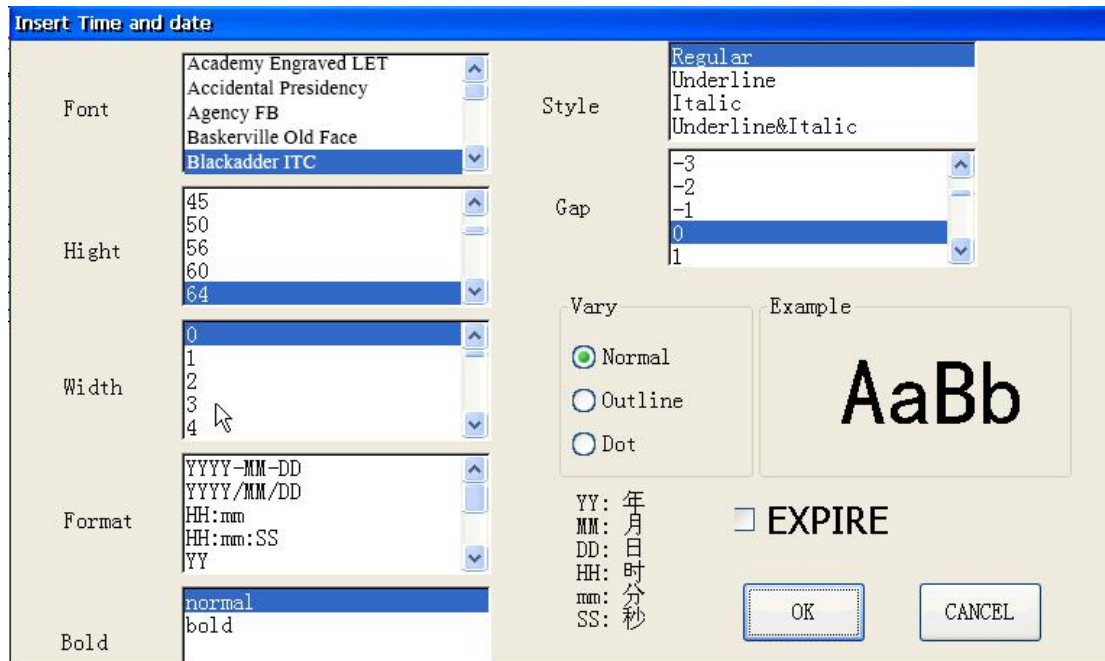
Note: 1. the machine starts 15 seconds to enter the main page and then insert the U disk.

2. The use of U disks memory can not exceed 8G.

3. Don't directly change the contents of the data.txt file in the U disk.



Insert time



Jet printing time: insert current time into the message. The font and width can be changed to a maximum height of 48mm. You can change the thickness style and choose character interval. Special effect are normal, dot matrix and hollow.

(width of the dot matrix must be 0).

Format selection: If you need yyyy-mm-dd, HH:MM:SS insertion time variable as a whole, please choose the same width font (such as bold is the same width font).

If a special order is required, a single variable unit can be inserted one by one. (ss:DD:YY, e.g.: Seconds: Day: year)



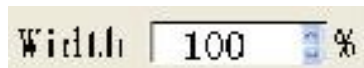
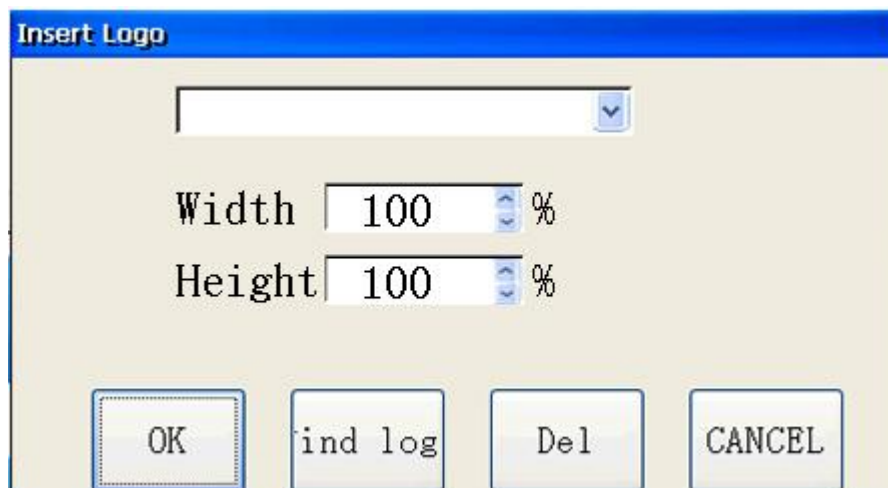
Insert logo

Logo printing: the picture can be loaded from the U disk, and it must be BMP format. The image height is inside 48mm.

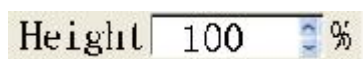
Requirements for U disk:

1. Choose genuine high-quality U-disk, memory should not be too large, 4-8G can be.
2. It is not advisable to store too much content unrelated to jet printing on U-disk.

For example: picture or videos



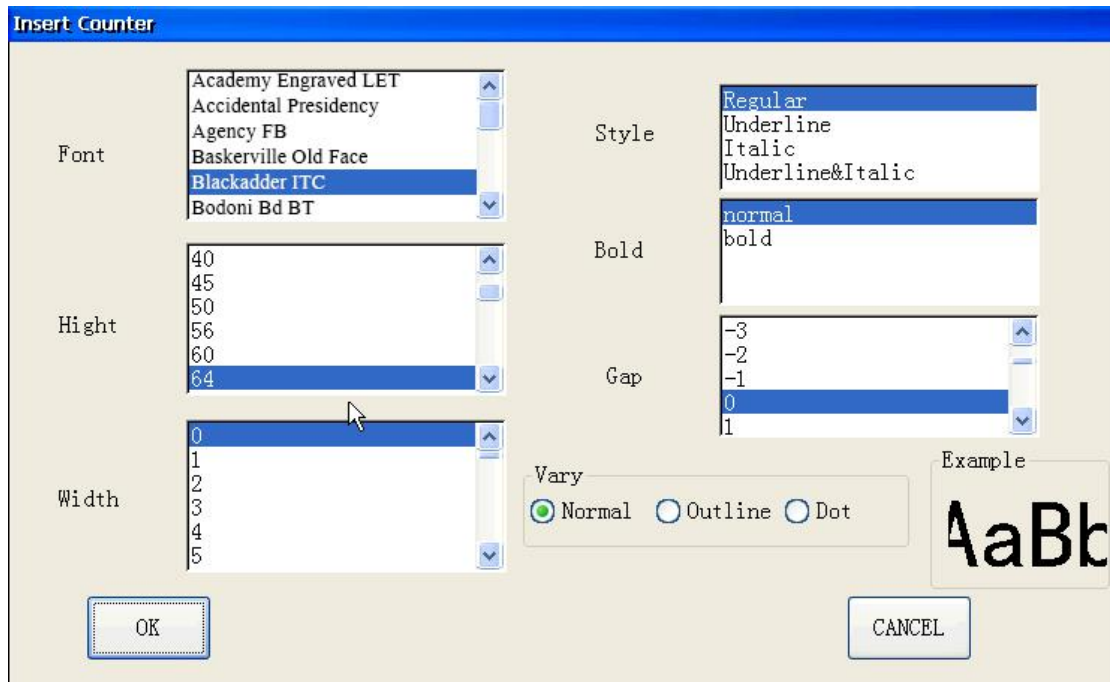
The numerical range is 0-100. The picture width can be adjusted.



The numerical range is 0-100. The picture height can be adjusted.



Insert counter



Font: The font can be chosen freely

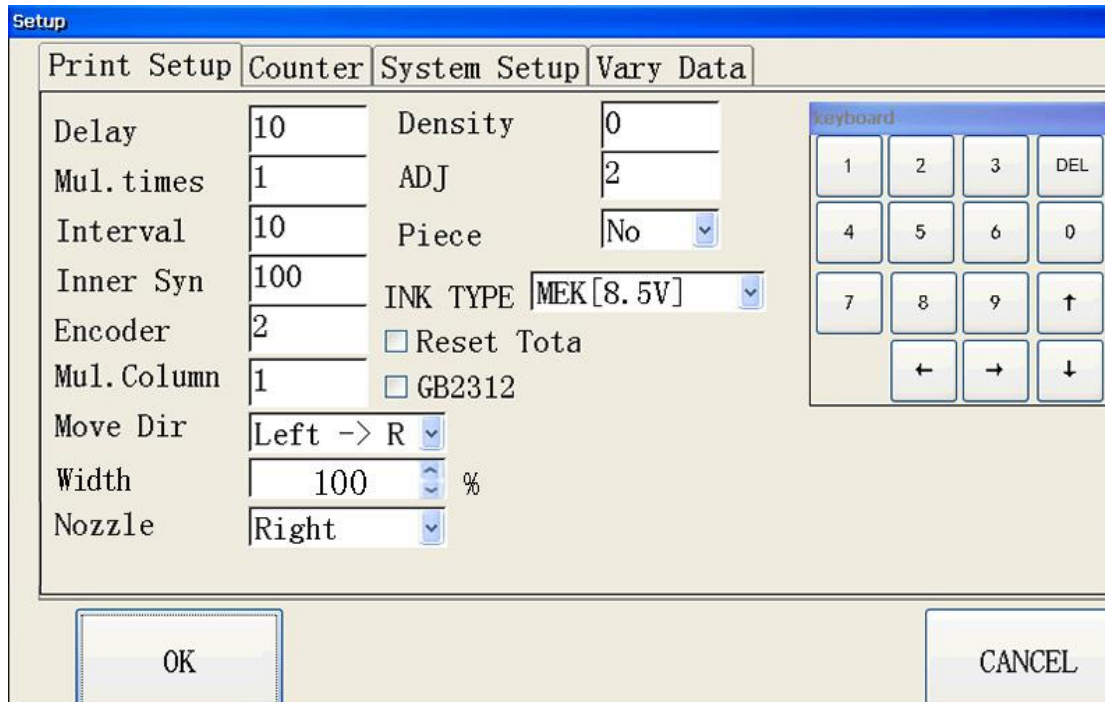
Hight: The highest printing height is 48mm, the height can be chosen.

Style: Underline, tilt, underline and tilt. Font size can be added. You can choose the font spacing. Special effects are normal,, hollow and dot matrix.

(width of the dot matrix must be 0).



Print set up



Delay: Allows you adjusting the distance of printing right after photocell is triggered.

Inner Syn: It is effective only when the width of the sync word is 0. The bigger the value, the faster tit sprays. (Dedicated online machine. The maximum is 240)

Encoder: The greater the value, the wider the information.

Handheld code machines usually use '1-4'. Online printer can only use '0'

Ink type: Users must select the voltage according to the actual cartridge type.

Piece: 1. To realize the subsection function,. we need to customize and contact the manufacturer in advance.

2. divided into 5 segments at most.

3. Paragraph gridlines cannot overlap

4. Use the deadline and normal insertion time as a paragraph

5. the vertical arrangement of variable is also considered as a paragraph, even if it is edited in segments.



Counter set up

Bit: Counting digits

Dir: More count/ Less count

Start: Counting start value

Stop: End of count

Step: Count the changing step size

Interval: Number of repetitions of the same number

Loops: Number of valid cycles for counting values (0 is infinite loop)

Prefix: Yes (e.g.001/002/003) No (e.g.1/2/3)

Setup

Print Setup Counter System Setup Vary Data

Bit 4 Loops 1

Dir. Inc Prefix Ye

Start 1

Stop 9999

Step 1

Interval 1

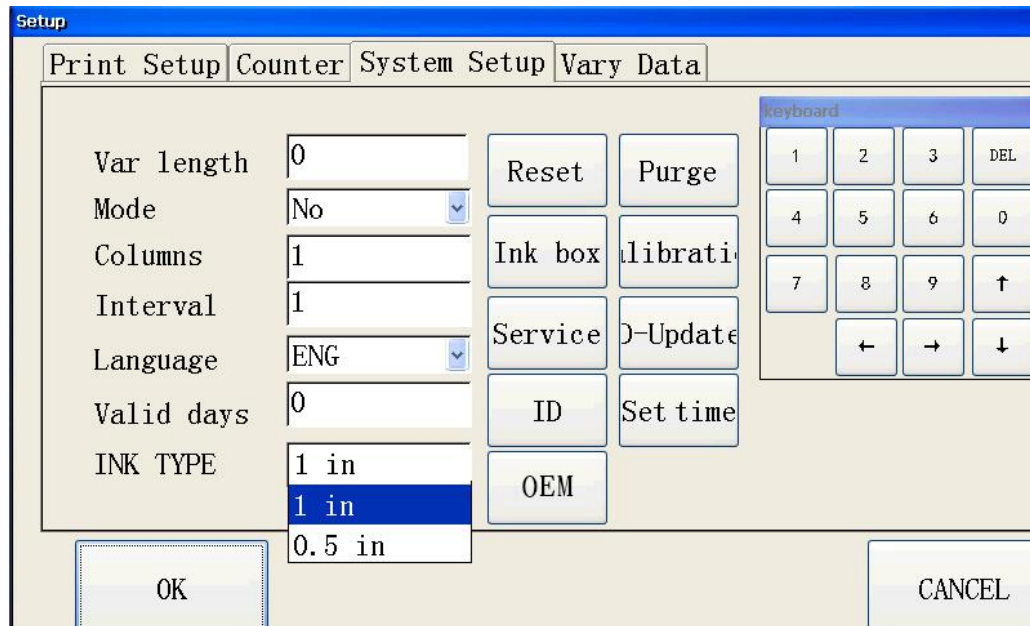
keyboard

1	2	3	DEL
4	5	6	0
7	8	9	↑
←	→	↓	

OK CANCEL



System set up



Var length: Character length when text is bound as a variable (0-100 digit)

Mode: No-No flash Yes-Have flash

Columns: Flash columns

Interval: Pause time between flashes

Language: English or Chinese

Valid days: calculated as of this date

Set time: date and time setting of the printer system

Calibration: Touch screen position calibration

Reset: Clear the message name and picture with a button

Purge: Force the nozzle to eject ink (must be placed in front of the cartridge) click again to stop cleaning

Service: Enter this mode, the main board program upgrade (need to contact the manufacturer to guide operation)

OEM: Enter the password to modify the left view of the main interface

(password: 888888)



System/double nozzle

Setup

Print Setup Counter System Setup Var: Mul. Setup

Align Adj 375

Over Lap 35

keyboard

1	2	3	DEL
4	5	6	0
7	8	9	↑
←	→	↓	

OK CANCEL

Align Adj: ensure that nozzles 1 and 2 Are aligned vertically

Over Lap: Guarantee the horizontal alignment of nozzles 1 and 2



Cartridge use attention

1. The power supply of the machine must be cut off before pulling cartridge

2. If you do not use the machine more than 20 minutes, you must remove the cartridge from the machine. And clamp it with a clip. [Be sure to keep the clip well]
3. The cartridge is best used within three months after it is opened and powered on.
4. Because the cartridge is fast-drying, it is normal that a little wire drawing and line missing occur in the use process.
5. If the phenomenon of wire drawing and line missing occurs.

Method 1: The sprinkler can be wiped in one direction with a soft paper towel.

Method 2: After the vertical resolution is changed to 300 in the advanced menu, another sprinkler (left or right) is used to retransmit the information for printing.

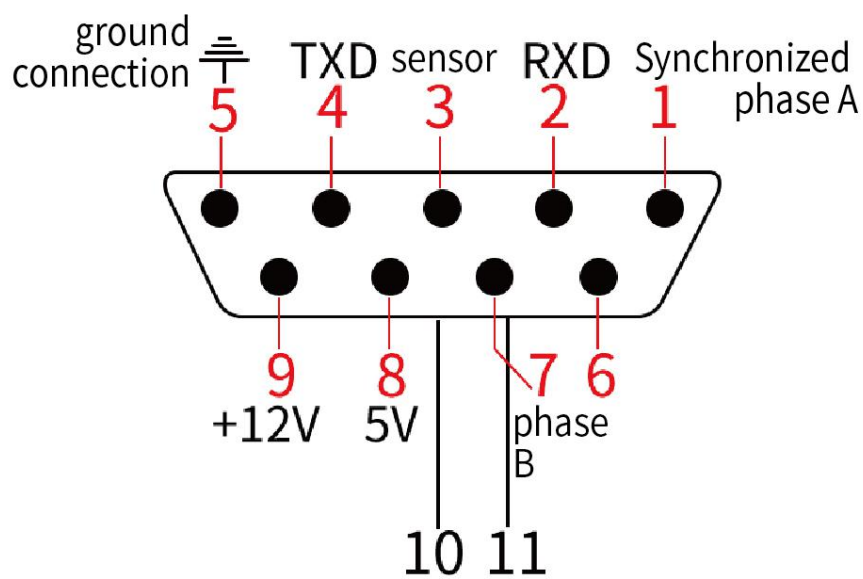
6. If it is fast-drying white ink, shake it for 5-10 minutes before use, otherwise the color will be lighter. [Be careful not to shake too hard]



Dimension diagram



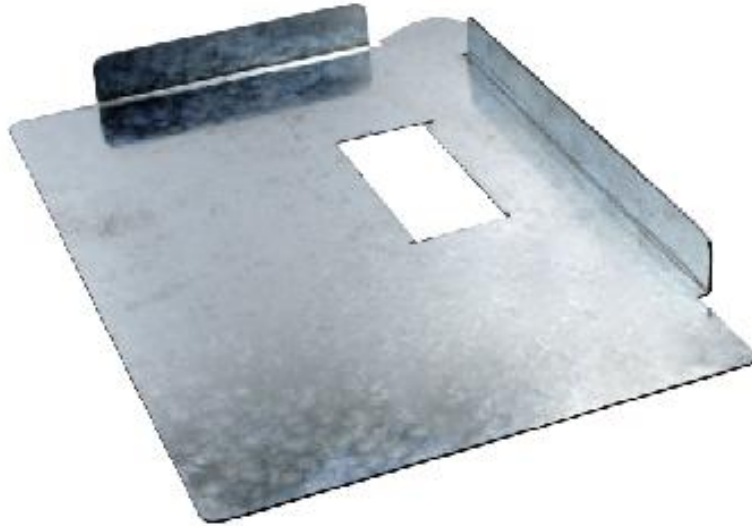
DB9pin wiring diagram



Note: TXD and RXD are 3.3V.

Common accessories

Printing board



Printing table



Conveyor belt



Big bracket



Note: The above commonly used accessories need to be purchased at

extra cost

Packing list

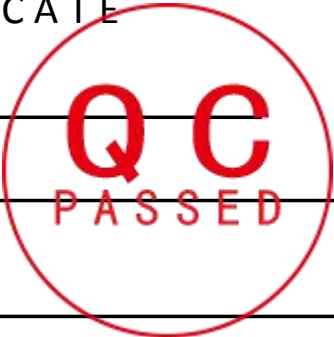
No	Part name	Qty	Exterior	Handheld
1	High-end chassis	1		★
2	Hand-held inkjet printer	1		★
3	Charger 16.8V 1A	1		★
4	O-ring	5		★
5	Cartridge	2		○
6	Screwdriver	1		★
7	Stylus	1		★
8	Mouse	1		★
9	Printer operation manual	1		★

Note: ★ to be standard, ○ pay for

Warranty service card

In the normal use and care of the situation, if found product quality problems, the company will give free maintenance or replacement. The warranty period for product quality is shown in the table below:

Model:		Dealer:	
Number:		Date of purchase:	
Note:			
Product	Product	Warranty period	
Warranty period	Inkjet printer	One year	
Cause of issue:			
Tel:			

<h1>Certification</h1> <p>CERTIFICATE</p>	
Model: _____	
Inspectors: _____	
Date of Manufacture: _____	

Disclaimer:

1. In the course of using this product, if there are serious falls, open fire, water intake, corrosion of unknown chemicals, and personal disassembly, it is not within the scope of warranty.

2. In case of machine failure, please backup important information in time before repairing, in order to prevent information loss.

The final interpretation right of the disclaimer belongs to the company